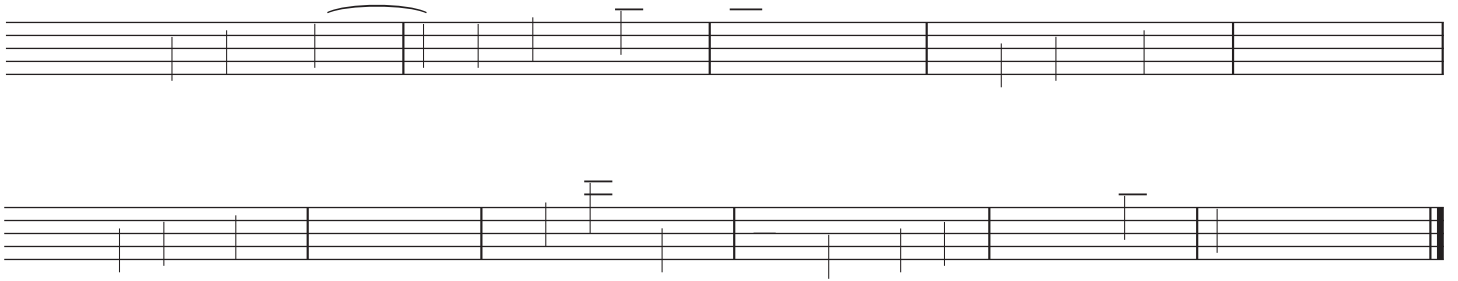


①

②

③



{ h = c 120-144 }

The first staff of music contains a sequence of notes. It begins with a slur over two notes, with an 'F' marking above the first. This is followed by another slur over two notes, also with an 'F' marking above the first. The staff continues with several groups of notes, some of which are connected by thick black horizontal bars, suggesting a specific performance technique or a complex rhythmic pattern. The notes are distributed across the staff lines, with some appearing as stems without heads.

The second staff of music continues the sequence. It features a group of notes with a thick black bar underneath. Further along, there are two slurs, each with an 'F' marking above the first note of the slur. The staff contains various note stems and some thick black bars, maintaining the complex notation style seen in the first staff.

The third staff of music starts with a diagonal line that descends from the left side of the staff towards the first few notes. These notes are marked with 'F' above them. The rest of the staff is empty, with vertical bar lines indicating the measure structure.